

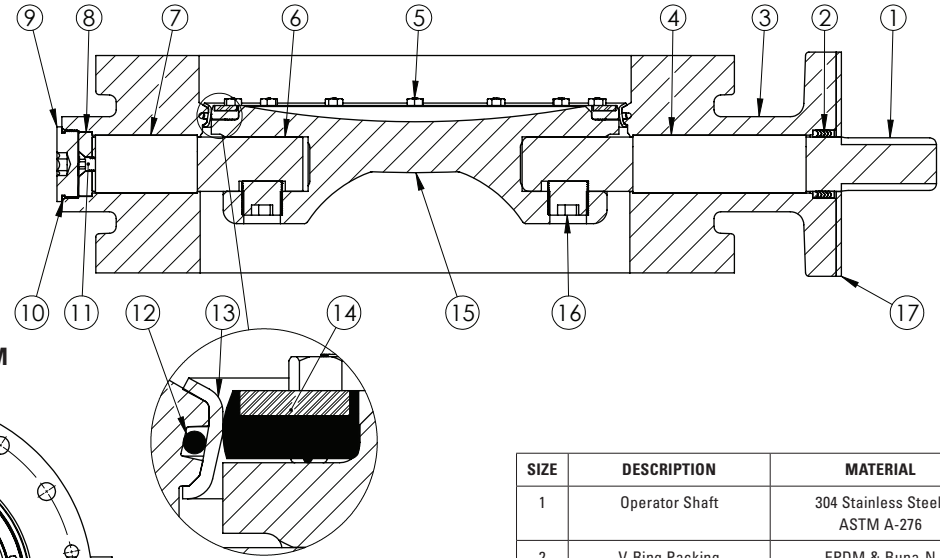
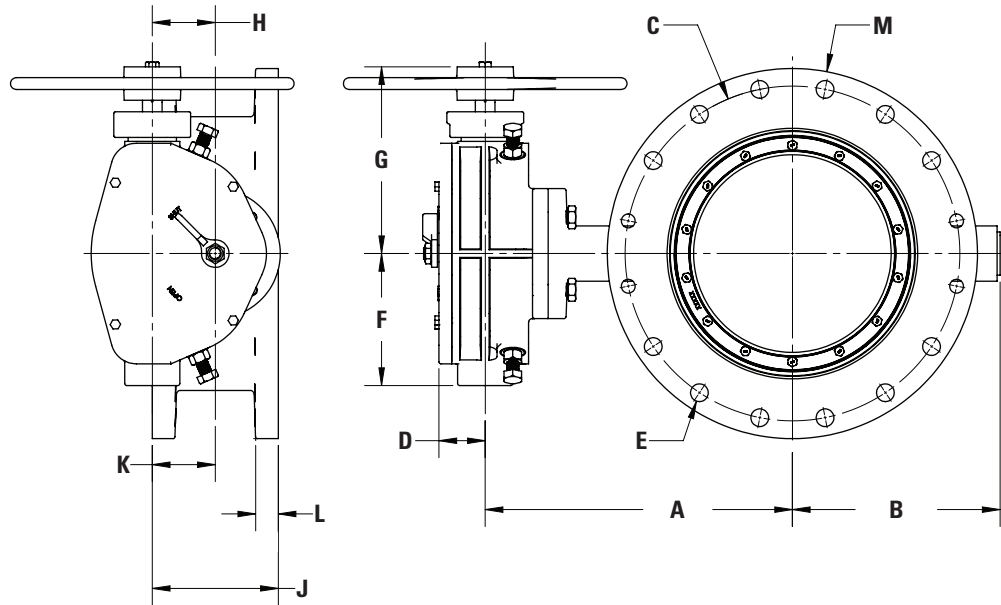


MCWANE
PLANT & INDUSTRIAL

AWWA C504 BUTTERFLY VALVE FLANGED ENDS - CL150 WITH HANDWHEEL OPERATOR SIZES 14"-24"

DRAWING NO.- **BD16-F11-M2210-11110** REV - 10/28/20

DRAWN BY - **CTJ** 16" valve shown here



N - Number of turns
P - Number of bolt holes
Q - Diameter of bolts
AA - No. of Threaded Holes
AB - Diameter of Threaded Holes
HW - Handwheel Diameter

1. Flow may be in either direction
2. Valve shaft will meet or exceed AWWA C504 requirements
3. Reference AWWA C504 for flanges and drilling (ANSI 125)
4. N turns to close
5. (P) Q bolts on Mechanical Joint
6. Rated for 150 PSI working pressure

SIZE	A	B	C	D	E	F	G	H	J	K	L	M	N	P	Q	AA	AB	OP. FLG	HW	WEIGHT
14"	18-3/4"	12-3/16"	18-3/4"	2-15/16"	1-1/8"	8-3/8"	11-7/8"	N/A	8"	4"	1-3/8"	21"	48	12	1"	4	1"-8 UNC Thru	FA16	18"	485 lbs.
16"	19-1/2"	13-3/16"	21-1/4"	2-15/16"	1-1/8"	8-3/8"	11-7/8"	4"	8"	4"	1-7/16"	23-1/2"	48	16	1"	4	1"-8 UNC Thru	FA16	18"	570 lbs.
18"	20-1/4"	14-7/16"	22-3/4"	2-15/16"	1-1/4"	8-3/8"	11-7/8"	4"	8"	4"	1-9/16"	25"	48	16	1-1/8"	4	1-1/8"-7 UNC Thru	FA16	18"	735 lbs.
20"	21-1/2"	15-7/16"	25"	2-15/16"	1-1/4"	8-3/8"	11-7/8"	4"	8"	4"	1-11/16"	27-1/2"	48	20	1-1/8"	4	1-1/8"-7 UNC; 1-3/4" Min. Depth	FA16	18"	860 lbs.
24"	24-1/8"	18-1/2"	29-1/2"	2-15/16"	1-3/8"	10-3/8"	11-7/8"	6"	8"	4"	1-7/8"	32"	72	20	1-1/4"	4	1-1/4"-7 UNC; 7/8" Min. Depth	FA25	18"	1,165 lbs.

SIZE	DESCRIPTION	MATERIAL
1	Operator Shaft	304 Stainless Steel, ASTM A-276
2	V-Ring Packing	EPDM & Buna-N
3	Butterfly Valve Body	Ductile Iron, ASTM A-536
4	Upper Journal Bearing	Nylatron
5	Vane Ring Hexhead Cap Screws	18-8 Stainless Steel
6	Thrust Shaft	304 Stainless Steel, ASTM A-276
7	Lower Journal Bearing	Nylatron
8	Thrust Bearing	Bronze Alloy
9	Body End Plug	Steel
10	Body End Plug O-ring	EPDM
11	Thrust Bearing Cap Screw	18-8 Stainless Steel
12	Body O-ring	EPDM
13	Body Seat Ring	316 Stainless Steel
14	Vane Seat Ring	EPDM w/ Stainless Steel Insert
15	Vane	Ductile Iron, ASTM A-536
16	Vane Shaft Torque Plug	18-8 Stainless Steel
17	Seal Plate*	Steel

* Seal Plate provided with all barestem valves, and used with all purchased operators.