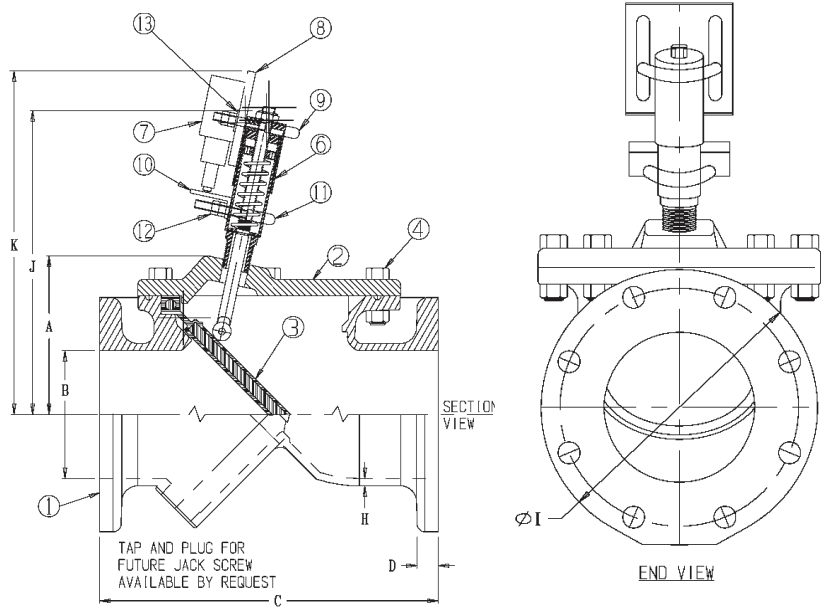


# KEN-FLEX™ CHECK VALVE WITH POSITION INDICATOR AND SWITCH SIZES 3" -12" DOMESTIC



E - BOLT CIRCLE DIA. END FLANGE  
F - NUMBER OF BOLTS REQ'D EACH END FLANGE  
G - BOLT HOLE DIAMETER FOR END FLANGE  
END FLANGES CONFORM TO ANSI B16.1

## INSTALLATION NOTE S

1. Preferred KV installs switch, though with caution, customer is able to perform at their own risk.
2. Requires electrical service to switch (which oscillates flexible wiring / conduit / strain relief to meet all local code.
3. For further detail, drawing 55014 may be referred to.

**NOTE 1:**  
Optional Position Indicator

PARTS LIST			
PART No.	PART	MATERIAL	ASTM DESIGNATION
1	Body (FLG x FLG)	Ductile Iron, Coated	ASTM A536 GR 65-45-12
2	Cover Plate	Ductile Iron, Coated	ASTM A536 GR 65-45-12
3	Flapper	EPDM Flapper, Met. Insert	A536 DI/D-2000 BK 807
4	Cover Bolts & Nuts	Stainless Steel	SS 18-8 F593
5	O-Ring	Nitrile (Buna-N)	ASTM D2000
6	Position Indicator Subassembly - p/n 448100P	Stainless Steel Ext. Components	----
7	A-B Rockwell 802T-BA Push Switch	Flex Cord Required	----
8	Adapter Plate	Stainless Steel 304	ASTM 276
9	Upper U-Bolt - Rubber Cushioned	McMasterr-Carr 30555T44	ASTM A193
10	Trip Angle	Stainless Steel 304 1 x 1 x 3/16	ASTM 276
11	Lower U-Bolt - Rubber Cushioned	McMasterr-Carr 30555T43	ASTM A193
12	Nuts - Add one to each side of clamp	304 SS (Some may come w/ U Bolts)	ASTM A193
13	Washers - 3/8 Diameter	Stainless Steel 304	ASTM A193

DIMENSIONS											
SIZE	A (APPROX.)	ØB	C	D (NDM)	ØE	F	ØG	H (NDM)	I	J (APPROX.)	K (APPROX.)
3	5.37	4.00	13	1.00	6.00	4	*1*	0.31	9.0	12.21	14.21
4	5.37	4.00	13	1.00	7.50	8	0.75	0.31	9.0	12.21	14.21
6	7.45	6.00	16	1.06	9.50	8	0.88	0.34	11.0	14.28	16.28
8	8.77	8.00	19.5	1.19	11.75	8	0.88	0.34	13.5	15.61	17.61
10	10.20	10.00	24.5	1.25	14.25	12	1.00	0.38	16.0	17.04	19.04
12	11.61	12.00	27.5	1.28	17.00	12	1.00	0.41	19.0	18.45	20.45

\*1\* HOLES ARE TAPPED 0.625UNC-11-2B, STRADDLE C.L.