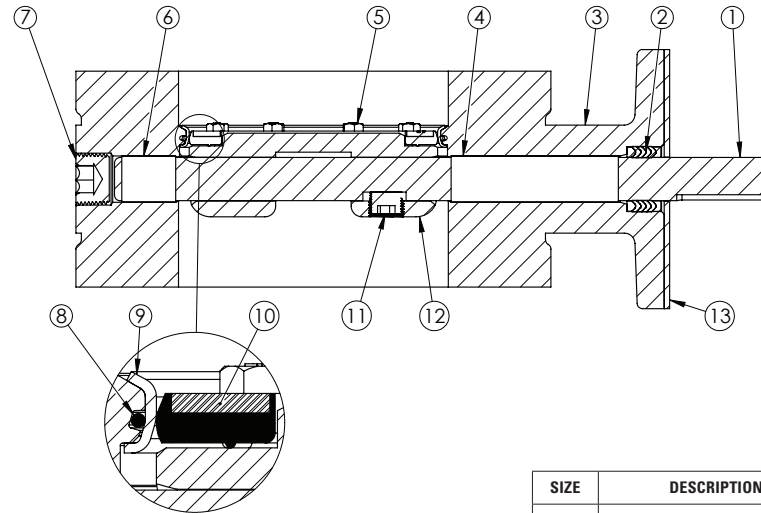
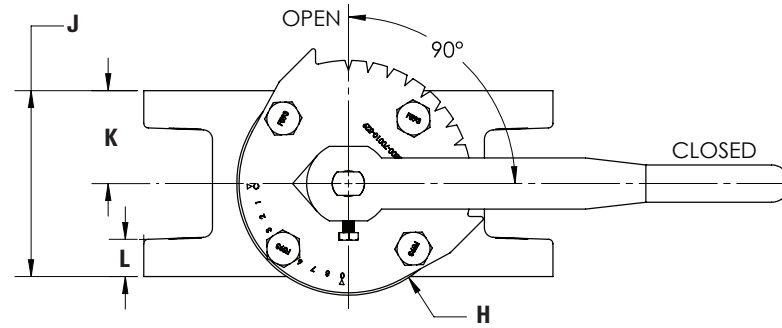
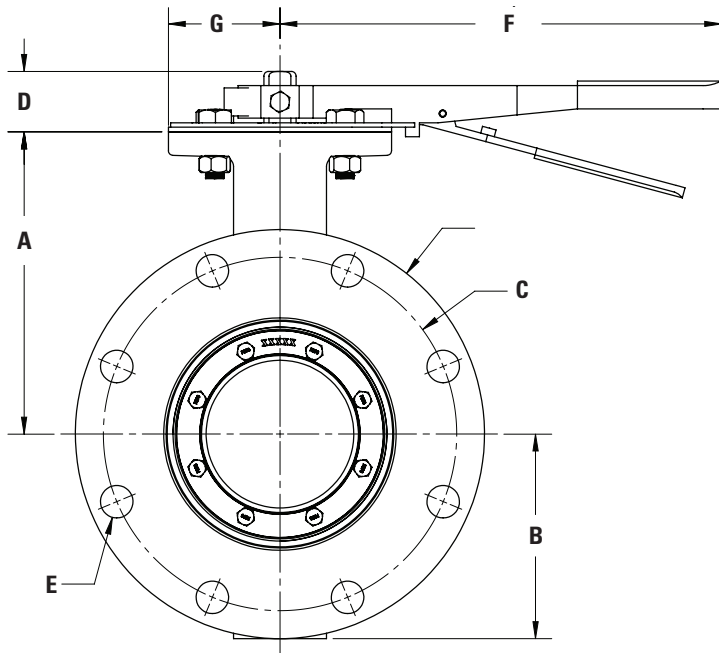


# **AWWA C504 BUTTERFLY VALVE FLANGED ENDS - CL150 WITH LEVER SIZES 3"-8"**

DRAWING NO.- **BD06-F11-L0000-11110** REV - **10/14/20**

DRAWN BY - **CTJ** 6" valve shown here



**P** - Number of bolt holes  
**Q** - Diameter of bolts

1. Flow may be in either direction
2. Valve shaft will meet or exceed AWWA C504 requirements
3. Reference AWWA C504 for flanges and drilling (ANSI 125)
4. N turns to close
5. (P) Q bolts on each flange
6. Rated for 150 PSI working pressure

SIZE	A	B	C	D	E	F	G	H	J	K	L	P	Q	OP. FLG	WEIGHT
3"	6-13/16"	4-13/16"	6"	1-3/4"	5/8"	11-7/8"	3"	6"	5"	2-1/2"	1"	4	5/8"-11 UNC	FA12	75 lbs.
4"	6-13/16"	4-13/16"	7-1/2"	1-3/4"	3/4"	11-7/8"	3"	6"	5"	2-1/2"	1"	8	5/8"	FA12	75 lbs.
6"	7-5/8"	5-1/2"	9-1/2"	1-7/16"	7/8"	11-7/8"	3"	6"	5"	2-1/2"	1"	8	3/4"	FA12	95 lbs.
8"	10-3/8"	6-3/4"	11-3/4"	1-5/8"	7/8"	11-7/8"	3"	6"	6"	3"	1-1/8"	8	3/4"	FA12	140 lbs.

SIZE	DESCRIPTION	MATERIAL
1	Operator Shaft	304 Stainless Steel, ASTM A-276
2	V-Ring Packing	EPDM & Buna-N
3	Butterfly Valve Body	Ductile Iron, ASTM A-536
4	Upper Journal Bearing	Nylatron
5	Vane Ring Hexhead Cap Screws	18-8 Stainless Steel
6	Lower Journal Bearing	Nylatron
7	Body End Plug	Steel
8	Body O-ring	EPDM
9	Body Seat Ring	316 Stainless Steel
10	Vane Seat Ring	EPDM w/ Stainless Steel Insert
11	Vane Shaft Torque Plug	18-8 Stainless Steel
12	Vane	Ductile Iron, ASTM A-536
13	Seal Plate*	Steel

\* Seal Plate must be ordered separately with all barestem vavles.