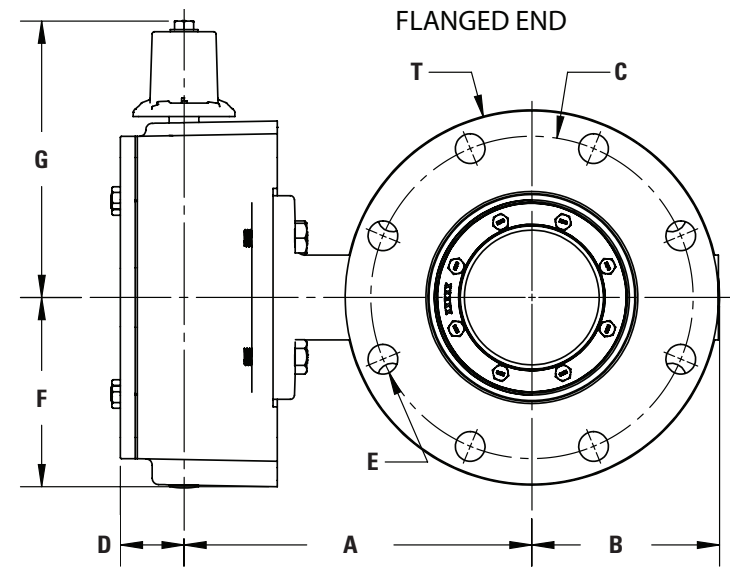
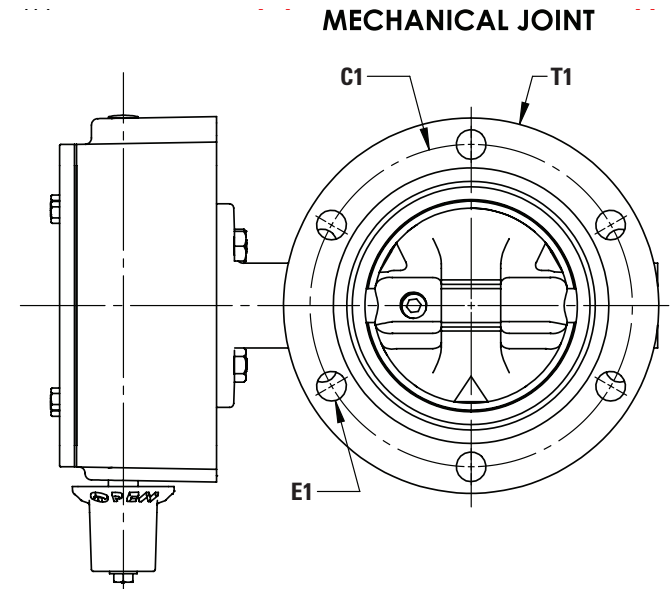
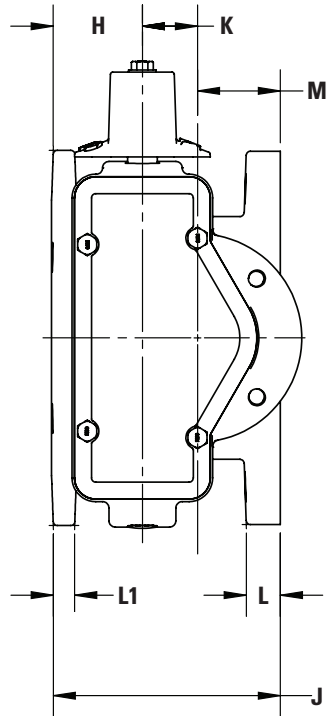
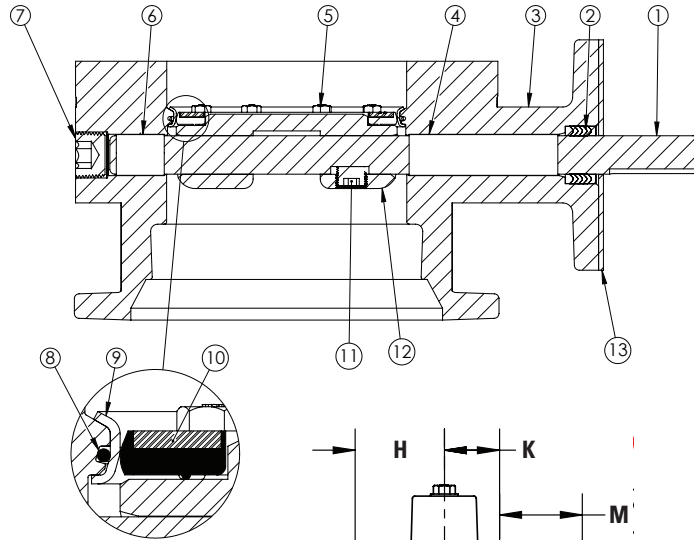


**AWWA C504
BUTTERFLY VALVE
FLG x MJ - CL150
WITH BURIED SERVICE
SIZES 6", 8", 12", 16"**

DRAWING NO. - **BD16-X11-M1110-11110** REV - 7/9/21

DRAWN BY - **CM** 6" valve shown here



N - Number of turns
P - Number of bolt holes on flange
Q - Diameter of flange bolts
R - Number of bolts on MJ end
S - Diameter of MJ bolts

1. Flow may be in either direction
2. Valve shaft will meet or exceed AWWA C504 requirements
3. Reference AWWA C504 for flanges and drilling (ANSI 125)
4. N turns to close
5. (P) Q bolts on flange (no threaded holes)
6. (R) S bolts on each flange
7. Rated for 150 PSI working pressure
8. Gasket, glands, and bolts for mechanical joint furnished with valve when specified on order

SIZE	DESCRIPTION	MATERIAL
1	Operator Shaft	304 Stainless Steel, ASTM A-276
2	V-Ring Packing	EPDM & Buna-N
3	Butterfly Valve Body	Ductile Iron, ASTM A-536
4	Upper Journal Bearing	Nylatron
5	Vane Ring Hexhead Cap Screws	18-8 Stainless Steel
6	Lower Journal Bearing	Nylatron
7	Body End Plug	Steel
8	Body O-ring	EPDM
9	Body Seat Ring	316 Stainless Steel
10	Vane Seat Ring	EPDM w/ Stainless Steel Insert
11	Vane Shaft Torqe Plug	18-8 Stainless Steel
12	Vane	Ductile Iron, ASTM A-536
13	Seal Plate*	Steel

* Seal Plate must be ordered separately with all barestem valves.

SIZE	A	B	C	C1	D	E	E1	F	G	H	J	K	L	L1	M	N	P	Q	R	S	T	T1	AA	AB	OP. FLG	WEIGHT
6"	10-1/4"	5-1/2"	9-1/2"	9-1/2"	1-7/8"	7/8"	7/8"	5-9/16"	8-1/8"	2-5/8"	6-11/16"	1-5/8"	1"	5/8"	2-7/16"	29	8	3/4"	6	3/4"	11"	11-1/16"	N/A	N/A	FA12	120 lbs.
8"	13"	6-3/4"	11-3/4"	11-3/4"	1-7/8"	7/8"	7/8"	5-9/16"	8-1/8"	2-7/8"	7-1/2"	1-5/8"	1-1/8"	1"	3"	29	8	3/4"	6	3/4"	13-1/2"	13-5/16"	N/A	N/A	FA12	160 lbs.
12"	14-1/8"	9-1/2"	17"	16-1/4"	1-7/8"	1"	7/8"	5-9/16"	8-1/8"	3-1/8"	8-3/4"	1-5/8"	1-1/4"	3/4"	N/A	29	12	7/8"	8	7/8"	19"	17-7/8"	N/A	N/A	FA12	315 lbs.
16"	19-1/2"	13"	21-1/4"	21"	2-15/16"	1-1/8"	7/8"	8-3/8"	11-7/8"	3-7/8"	10-1/8"	4"	1-7/16"	7/8"	4"	48	16	1"	12	1"	23-1/2"	22-1/2"	4	1"-8 UNC Thru	FA16	645 lbs.