

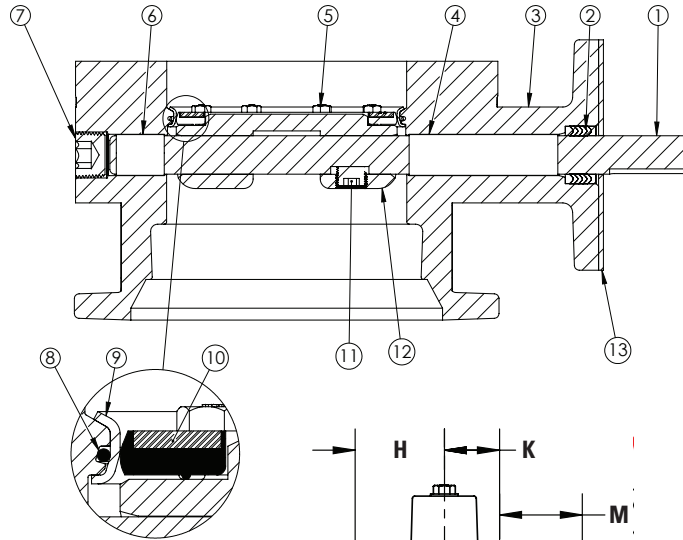


MCWANE
PLANT & INDUSTRIAL

AWWA C504 BUTTERFLY VALVE FLG x MJ - CL150 WITH BURIED SERVICE SIZES 6", 8", 12", 16"

DRAWING NO.- **BD16-X11-M1110-11110** REV - 7/9/21

DRAWN BY - **CM** 6" valve shown here

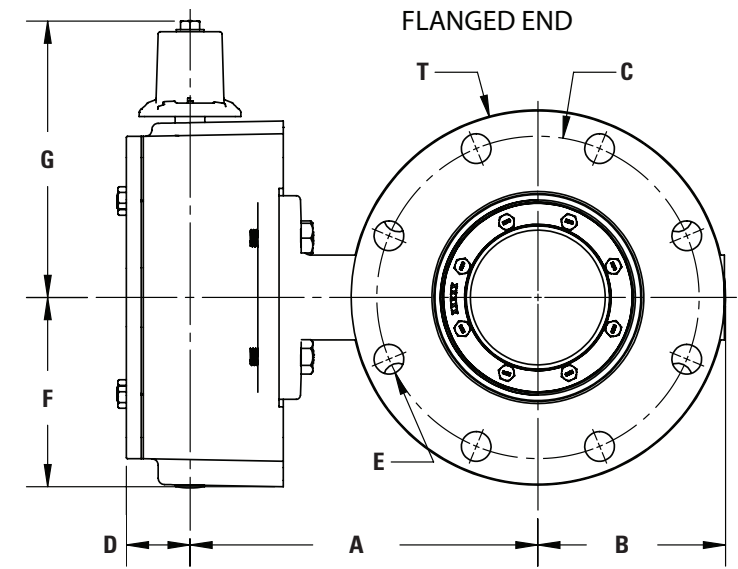
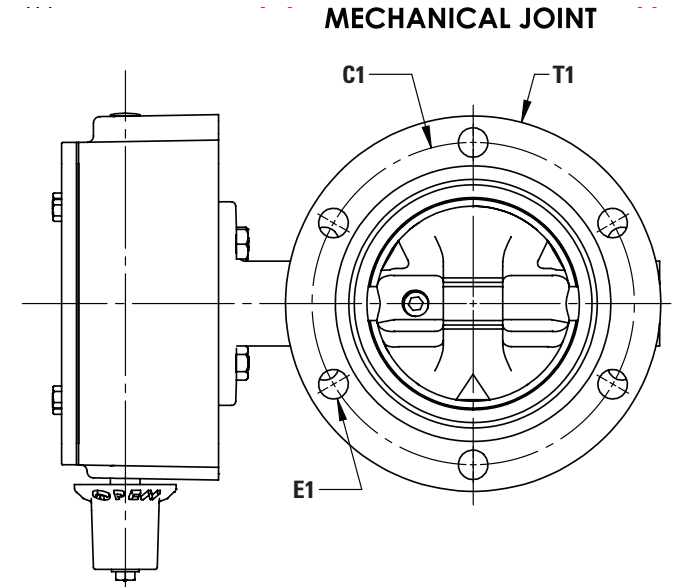
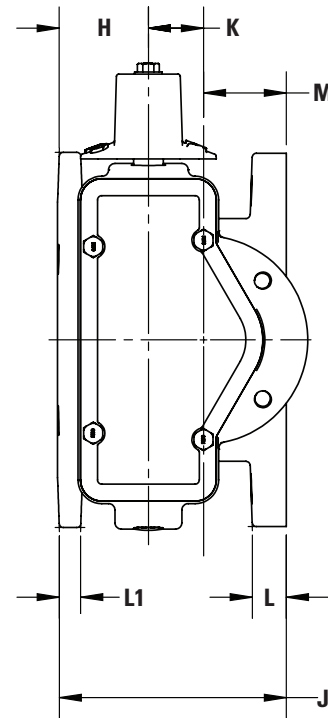


SIZE	DESCRIPTION	MATERIAL
1	Operator Shaft	304 Stainless Steel, ASTM A-276
2	V-Ring Packing	EPDM & Buna-N
3	Butterfly Valve Body	Ductile Iron, ASTM A-536
4	Upper Journal Bearing	Nylatron
5	Vane Ring Hexhead Cap Screws	18-8 Stainless Steel
6	Lower Journal Bearing	Nylatron
7	Body End Plug	Steel
8	Body O-ring	EPDM
9	Body Seat Ring	316 Stainless Steel
10	Vane Seat Ring	EPDM w/ Stainless Steel Insert
11	Vane Shaft Torque Plug	18-8 Stainless Steel
12	Vane	Ductile Iron, ASTM A-536
13	Seal Plate*	Steel

N - Number of turns
P - Number of bolt holes on flange
Q - Diameter of flange bolts
R - Number of bolts on MJ end
S - Diameter of MJ bolts

- Flow may be in either direction
- Valve shaft will meet or exceed AWWA C504 requirements
- Reference AWWA C504 for flanges and drilling (ANSI 125)
- N turns to close
- (P) Q bolts on flange (no threaded holes)
- (R) S bolts on each flange
- Rated for 150 PSI working pressure
- Gasket, glands, and bolts for mechanical joint furnished with valve when specified on order

* Seal Plate provided with all barestem valves, and used with all purchased operators.



SIZE	A	B	C	C1	D	E	E1	F	G	H	J	K	L	L1	M	N	P	Q	R	S	T	T1	AA	AB	OP. FLG	WEIGHT
6"	10-1/4"	5-1/2"	9-1/2"	9-1/2"	1-7/8"	7/8"	7/8"	5-9/16"	8-1/8"	2-5/8"	6-11/16"	1-5/8"	1"	5/8"	2-7/16"	29	8	3/4"	6	3/4"	11"	11-1/16"	N/A	N/A	FA12	120 lbs.
8"	13"	6-3/4"	11-3/4"	11-3/4"	1-7/8"	7/8"	7/8"	5-9/16"	8-1/8"	2-7/8"	7-1/2"	1-5/8"	1-1/8"	1"	3"	29	8	3/4"	6	3/4"	13-1/2"	13-5/16"	N/A	N/A	FA12	160 lbs.
12"	14-1/8"	9-1/2"	17"	16-1/4"	1-7/8"	1"	7/8"	5-9/16"	8-1/8"	3-1/8"	8-3/4"	1-5/8"	1-1/4"	3/4"	N/A	29	12	7/8"	8	7/8"	19"	17-7/8"	N/A	N/A	FA12	315 lbs.
16"	19-1/2"	13"	21-1/4"	21"	2-15/16"	1-1/8"	7/8"	8-3/8"	11-7/8"	3-7/8"	10-1/8"	4"	1-7/16"	7/8"	4"	48	16	1"	12	1"	23-1/2"	22-1/2"	4	1"-8 UNC Thru	FA16	645 lbs.