

AA-6 PRESSURE RELIEF VALVE

- PROTECTS PIPE LINE FROM SURGES
- AVAILABLE IN 2" AND 2½" SIZES

USES:

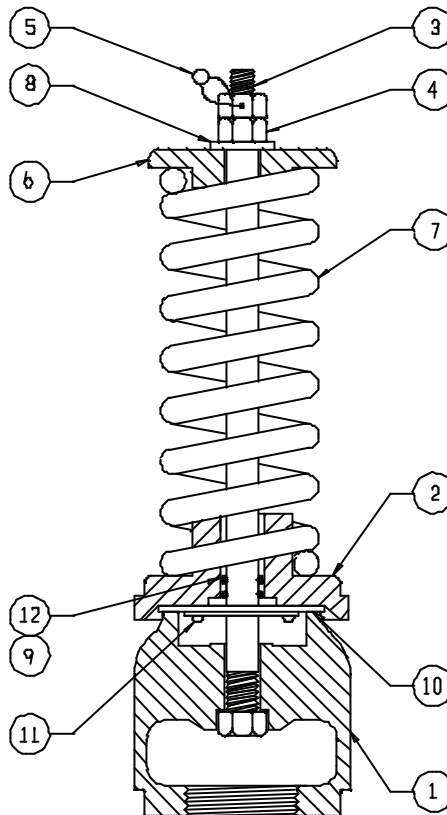
This moderately priced valve is especially suitable for most aluminum sprinkler and higher pressure plastic pipe.

FEATURES:

Dependable, time-proven design with the spring on top, out of the flow, for longer, more accurate operation. Constructed from high strength aluminum castings with stainless steel shaft, tempered steel spring, and non-sticking Teflon seal and bushing. This valve may be ordered factory set and sealed under actual hydrostatic conditions, or can be shipped to you for final field adjustment. When ordering field adjustable units, be sure to specify pressure range as Waterman uses springs with different compressive strengths to maximize the amount of release when excessive pressures occur.

Sizes: 2" and 2½"
 Pressure relief settings. 11 to 120 p.s.i.
 Specify AA-6A if preset
 Specify AA-6B if fieldset

PARTS LIST		
No.	Name	Qty.
1	Base	1
2	Cover	1
3	Guide Rod	1
4	Nut	2
5	Seal Wire	1
6	Spring Retainer	1
7	Spring	1
8	Washer	1
9	O-Ring	2
10	Cover Gasket/Seal Face	1
11	Gasket Retainer w/Screws	1
12	Bushing	1



2" & 2½" Model AA-6



Factory set and sealed or shipped for field setting