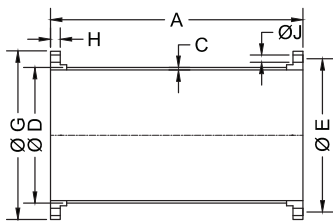


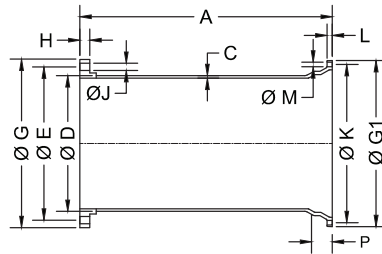
FABRICATED FLANGE PIPES

SIZE	A	B	O.D.		E	G	H		NO. OF FLG'D BOLT HOLES	J	K		L		NO. OF M.J. BOLT HOLES	M		P	
			MIN.	MAX.			MIN.	MAX.			MIN.	MAX.	MIN.	MAX.					
3			0.31	3.90	4.02	6.00	7.50	0.63	0.87	4	0.75	6.13	6.25	0.88	0.94	4	0.75	0.81	2.50
4	AS REQUIRED	AS REQUIRED	0.32	4.74	4.86	7.50	9.00	0.82	1.06	8	0.75	7.44	7.56	0.94	1.00	4	0.875	0.935	2.50
6			0.34	6.84	6.96	9.50	11.00	0.88	1.12	8	0.875	9.44	9.56	1.00	1.06	6	0.875	0.935	2.50
8			0.36	8.99	9.11	11.75	13.50	1.00	1.24	8	0.875	11.69	11.81	1.04	1.12	6	0.875	0.935	2.50
10			0.38	11.04	11.16	14.25	16.00	1.07	1.31	12	1.00	13.94	14.06	1.11	1.19	8	0.875	0.935	2.50
12			0.40	13.14	13.26	17.00	19.00	1.13	1.37	12	1.00	16.19	16.31	1.17	1.25	8	0.875	0.935	2.50
14			0.42	15.22	15.35	18.75	21.00	1.19	1.57	12	1.125	18.69	18.81	1.19	1.31	10	0.875	0.935	3.50
16			0.43	17.32	17.45	21.25	23.50	1.25	1.63	16	1.125	20.94	21.06	1.26	1.38	12	0.875	0.935	3.50
18			0.44	19.42	19.55	22.75	25.00	1.37	1.75	16	1.25	23.19	23.31	1.32	1.44	12	0.875	0.935	3.50
20			0.45	21.52	21.65	25.00	27.50	1.50	1.88	20	1.25	25.44	25.56	1.38	1.50	14	0.875	0.935	3.50
24			0.47	25.72	25.85	29.50	32.00	1.69	2.07	20	1.375	29.94	30.06	1.50	1.62	16	0.875	0.935	3.50
30			0.51	31.94	32.08	36.00	38.75	1.87	2.37	28	1.375	36.82	36.94	1.69	1.81	20	1.125	1.185	4.00
36			0.58	38.24	38.38	42.75	46.00	2.13	2.63	32	1.625	43.69	43.81	1.88	2.00	24	1.125	1.185	4.00
42			0.65	44.44	44.58	49.50	53.00	2.37	2.87	36	1.625	50.56	50.68	1.88	2.00	28	1.375	1.435	4.00
48			0.72	50.74	50.88	56.00	59.50	2.50	3.00	44	1.625	57.44	57.56	1.88	2.00	32	1.375	1.435	4.00
54			0.81	57.40	57.64	62.75	62.75	2.75	3.25	44	1.875	N/A	N/A	N/A	N/A	N/A	N/A	N/A	N/A

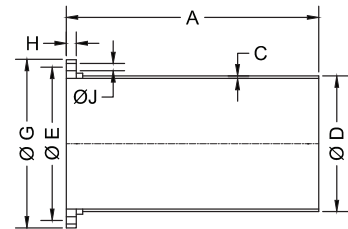
FLG X FLG



FLG X MJ

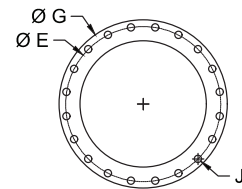


FLG X PE



- Tolerance on length of FLG x FLG and FLG x MJ pipe shall be +/- .125".
- Tolerance on length of FLG x PE shall be +/- .025".
- Above material shall meet all applicable sections of ANSI A21.10, A21.15, A21.51, B2.1, B16.1 / AWWA C110, C115, C150, C151 and all revisions thereto.
- Flanged pipe shall be ductile iron pipe with ductile iron flanges threaded on.
- Linings, if required, shall be in accordance with ANSI A21.4
- The mechanical joint bell for 30" & 36" sizes of ductile iron pipe have thickness different from those shown in ANSI A21.11, which are based on gray iron pipe. These reduced thicknesses provide a lighter-weight bell which is compatible with the wall thickness of ductile iron pipe.
- Submitted material only. Consult engineer for application.
- 250lb. faced and drilled flanges available upon request.

FLANGE DETAIL



DESCRIPTION: 3"-54" Fabricated Flange Pipe	DATE: 09/05/24	DRAWING: FP-DD0001-A
--	--------------------------	--------------------------------

Additional configurations for joint connections are available. Contact a Sales Representative for details.



McWane Plant & Industrial
1201 Vanderbilt Road
Birmingham, AL 35234