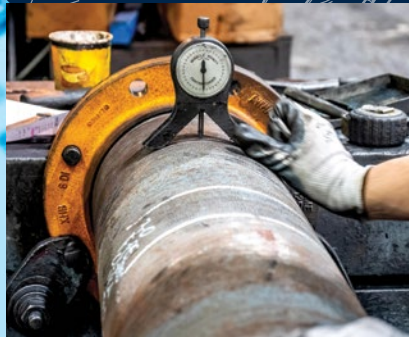
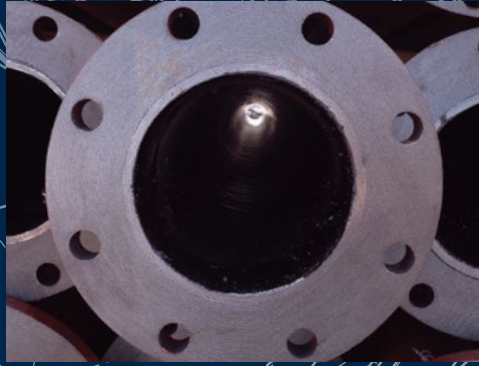


FABRICATED DUCTILE IRON FLANGE, WALL, & ANCHOR PIPE

mcwanepi.com





THE INTEGRATED SOLUTION FOR TREATMENT PLANT NEEDS

Combining expertise from eight key water infrastructure brands in the McWane family of companies, McWane Plant & Industrial (MPI) provides a singular access point for the essential products and service required for any water or wastewater plant project.

WHY MPI?

We're a new kind of company formed on the basis of three simple goals:

- To provide a primary source for best-in-class products from time-tested brands
- Offer veteran specialists as resources for any plant project of any scale
- Increase the ease and efficiency of the planning and completion of our clients' projects

Our dedicated team is comprised of dozens of treatment plant specialists with decades of experience. We work cooperatively with industry

partners to give each project the attention it deserves, providing unprecedented levels of communication, access and collaboration. Our support teams work within dedicated service regions allowing our experts to apply regionally specific knowledge, including state regulations, codes and environmental specifications. Our nationally certified Associate Design-Build Professionals are a valuable asset to Design-Build projects.

The extended manufacturing capabilities of MPI mean your precise requirements are closer in reach and delivered faster with less legwork from you. We offer products that conform to rigorous industry standards and can work with your team to customize and fulfill unique requests. As part of our commitment to American workers and industries, we're proud of our ability to provide products from domestic facilities and to meet all domestic funding requirements.

MPI - best in class.

FABRICATED DUCTILE IRON FLANGE, WALL, & ANCHOR PIPE

PRODUCT OVERVIEW

Fabricated Pipe & Wall Pipe is manufactured by McWane Plant & Industrial in 3" up to 54" diameters with a variety of joint combinations available. Our fabricated products can be manufactured to meet all USA domestic requirements.

Fabricated pipe is made to custom lengths to meet specific project needs. Pipe interior surfaces can be cement, glass, or Protecto 401™ lined to meet all applications.

Exterior coatings available include standard Bituminous, Temec primers and epoxies, or other



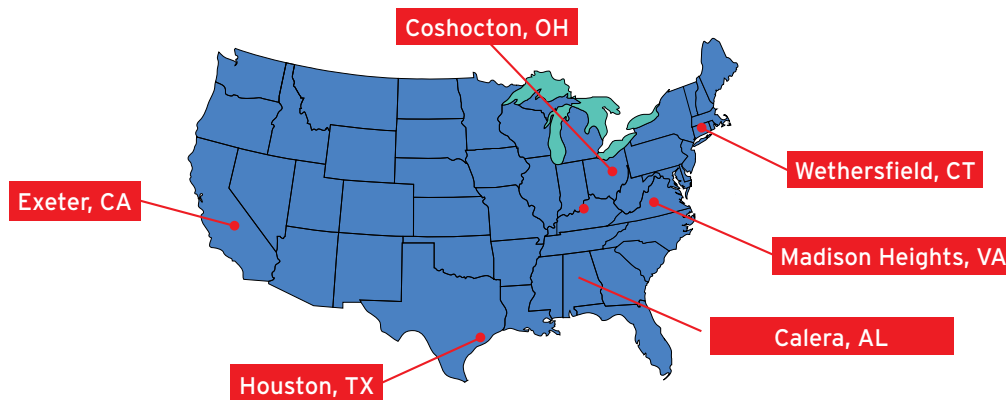
specialty coatings as required. Contact your representative for a complete selection of options available.

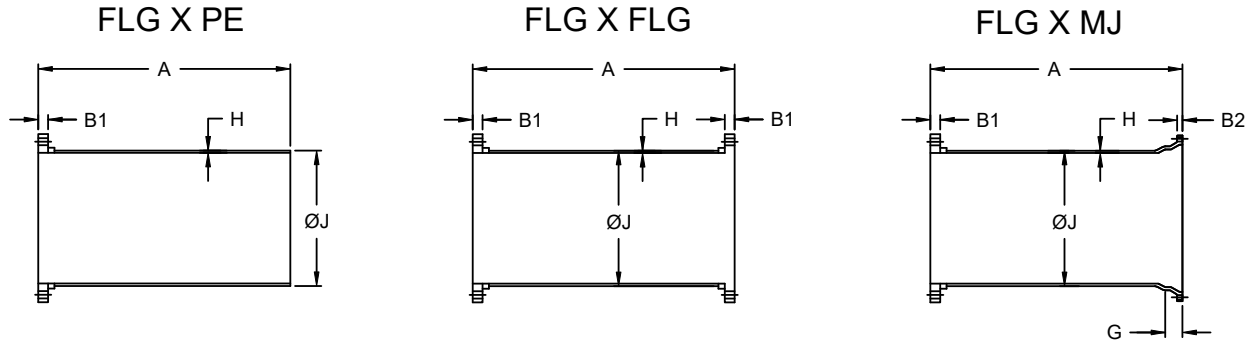
When required by specifications MPI can manufacture pipe with appurtenances added to the pipe barrel. MPI can make these customizations to meet your needs including holes, NPT Taps, Weld-on Bossed Outlets and Thread-O-Lets.

McWane Plant & Industrial can also provide customized take-offs, line drawings, and lay schedules as required for your projects.

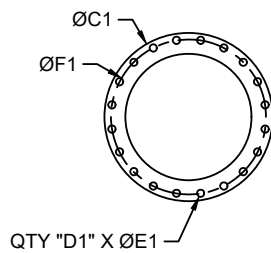
FABRICATION LOCATIONS

Strategically-located facilities allow us to provide fabricated pipe to projects across the United States.

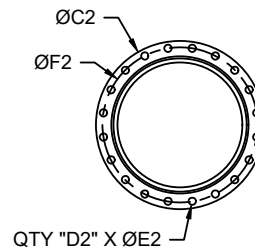




FLANGE
DETAIL



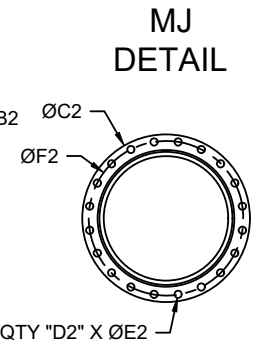
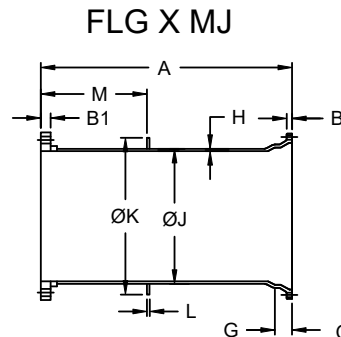
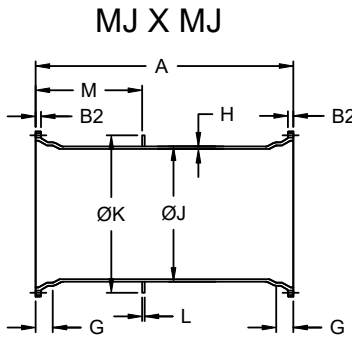
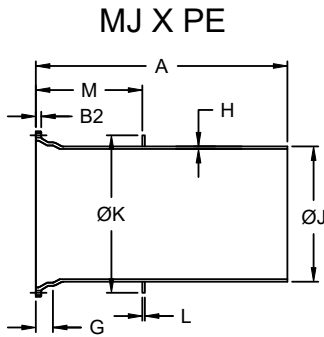
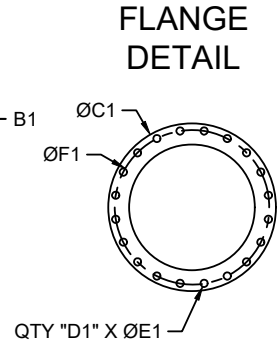
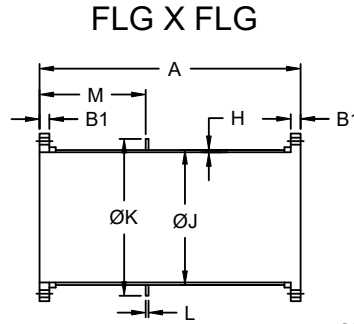
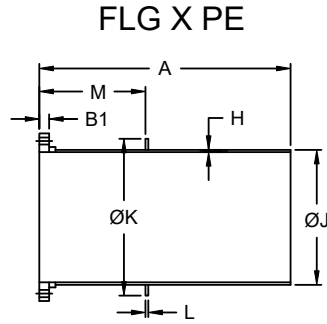
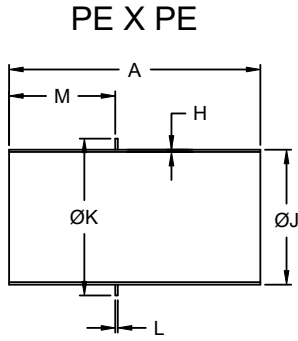
MJ
DETAIL



DIMENSIONS (Inches)														
SIZE	A	FLG					MJ					H	J	
		B1	C1	D1	E1	F1	B2	C2	D2	E2	F2			G
3	AS REQUIRED	0.63	7.50	4	0.75	6.00	0.88	7.69	4	0.75	6.19	2.50	0.31	3.96
4		0.82	9.00	8	0.75	7.50	0.94	9.12	4	0.88	7.50	2.50	0.32	4.80
6		0.88	11.00	8	0.88	9.50	1.00	11.12	6	0.88	9.50	2.50	0.34	6.90
8		1.00	13.50	8	0.88	11.75	1.04	13.37	6	0.88	11.75	2.50	0.36	9.05
10		1.07	16.00	12	1.00	14.25	1.11	15.69	8	0.88	14.00	2.50	0.38	11.10
12		1.13	19.00	12	1.00	17.00	1.17	17.94	8	0.88	16.25	2.50	0.40	13.20
14		1.19	21.00	12	1.13	18.75	1.19	20.31	10	0.88	18.75	3.50	0.42	15.30
16		1.25	23.50	16	1.13	21.25	1.26	22.56	12	0.88	21.00	3.50	0.43	17.40
18		1.37	25.00	16	1.25	22.75	1.32	24.83	12	0.88	23.25	3.50	0.44	19.50
20		1.50	27.50	20	1.25	25.00	1.38	27.08	14	0.88	25.50	3.50	0.45	21.60
24		1.69	32.00	20	1.38	29.50	1.50	31.58	16	0.88	30.00	3.50	0.47	25.80
30		1.87	38.75	28	1.38	36.00	1.69	39.12	20	1.13	36.88	4.00	0.51	32.00
36		2.13	46.00	32	1.63	42.75	1.88	46.00	24	1.13	43.75	4.00	0.58	38.30
42		2.37	53.00	36	1.63	49.50	1.88	53.12	28	1.38	50.62	4.00	0.65	44.50
48		2.50	59.50	44	1.63	56.00	1.88	60.00	32	1.38	57.50	4.00	0.72	50.80

- Tolerance on length of FLG x FLG and FLG x MJ pipe shall be +/- .125".
- Tolerance on length of FLG x PE shall be +/- .0625".
- Above material shall meet all applicable sections of ANSI A21.10, A21.15, A21.50, A21.51, B2.1, B16.1 / AWWA C110, C115, C150, C151 and all revisions thereto.
- Flanged pipe shall be ductile iron pipe with ductile iron flanges threaded on.
- Flange pipe is provided with cement lining per ANSI/AWWA A21.4/C104. Consult Sales Representative if other linings are required.
- The mechanical joint bell for 30" and 36" sizes of Ductile iron pipe have thicknesses different from those shown in ANSI A21.11, which are based on grey iron pipe. The reduced thickness provided a lighter-weight bell, which is compatible with the wall thickness of Ductile iron pipe.
- Submitted material only. Consult engineer for application.
- 250 lb. faced and drilled flanges available upon request.
- CL53 Minimum Wall Thickness for all Fabricated Products.
- Grooved pipe to meet ANSI/AWWA C606 also available, consult Sales Representative for details.

DESCRIPTION:	DATE:	DRAWING:
3"-48" Fabricated Flange Pipe Details & Dimensions	12/06/24	FP-DD0001-B



DIMENSIONS (Inches)

SIZE	A		FLG					MJ					H	J	K	L	M	
	MIN	MAX	B1	C1	D1	E1	F1	B2	C2	D2	E2	F2						G
3	AS REQUIRED	AS REQUIRED (MAX LENGTH: 3'-36" = 17'-6", 42"-48" = 19'-6")	0.63	7.50	4	0.75	6.00	0.88	7.69	4	0.75	6.19	2.50	0.31	3.96	6.50	0.50	AS REQUIRED
4			0.82	9.00	8	0.75	7.50	0.94	9.12	4	0.88	7.50	2.50	0.32	4.80	7.40	0.50	
6			0.88	11.00	8	0.88	9.50	1.00	11.12	6	0.88	9.50	2.50	0.34	6.90	9.50	0.50	
8			1.00	13.50	8	0.88	11.75	1.04	13.37	6	0.88	11.75	2.50	0.36	9.05	12.00	0.50	
10			1.07	16.00	12	1.00	14.25	1.10	15.69	8	0.88	14.00	2.50	0.38	11.10	14.10	0.50	
12			1.13	19.00	12	1.00	17.00	1.17	17.94	8	0.88	16.25	2.50	0.40	13.20	16.25	0.50	
14			1.19	21.00	12	1.13	18.75	1.19	20.30	10	0.88	18.75	3.50	0.42	15.30	18.40	0.50	
16			1.25	23.50	16	1.13	21.25	1.26	22.56	12	0.88	21.00	3.50	0.43	17.40	21.00	0.50	
18			1.37	25.00	16	1.25	22.75	1.32	24.83	12	0.88	23.25	3.50	0.44	19.50	23.10	0.50	
20			1.50	27.50	20	1.25	25.00	1.38	27.08	14	0.88	25.50	3.50	0.45	21.60	25.70	0.50	
24			1.69	32.00	20	1.38	29.50	1.50	31.58	16	0.88	30.00	3.50	0.47	25.80	30.00	0.50	
30			1.87	38.75	28	1.38	36.00	1.69	39.12	20	1.13	36.88	4.00	0.51	32.00	36.96	0.63	
36			2.13	46.00	32	1.63	42.75	1.88	46.00	24	1.13	43.75	4.00	0.58	38.30	43.40	0.63	
42			2.37	53.00	36	1.63	49.50	1.88	53.12	28	1.38	50.62	4.00	0.65	44.50	50.00	1.00	
48	2.50	59.50	44	1.63	56.00	1.88	60.00	32	1.38	57.50	4.00	0.72	50.80	56.50	1.00			

- Tolerance on location of waterstop shall be +/-0.125".
- All waterstops shall be attached for a water tight seal.
- All flanges shall be ductile iron and threaded on ductile iron pipe per ANSI/AWWA A21.15/C115.
- MJ x MJ shall have a Ductile iron MJ bell threaded on ductile iron pipe.
- Wall pipe is provided with cement lining per ANSI/ AWWA A21.4/C104.
- Consult sales representative if other linings are required.
- Above material shall meet all applicable sections of ANSI A21.10, A21.15, A21.50, A21.51, B2.1, B16.1 / AWWA C110, C115, C150, C151 and all revisions thereto.
- Submitted material only. Consult engineer for application.
- 250 lb. faced and drilled flanges available upon request.

DESCRIPTION: 3"-48" Fabricated Wall Pipe Details & Dimensions	DATE: 12/06/24	DRAWING: FP-DD0002-B
--	-------------------	-------------------------

ANCHOR PIPE DETAILS

ANCHOR PIPE COUPLINGS SPECIFICATION



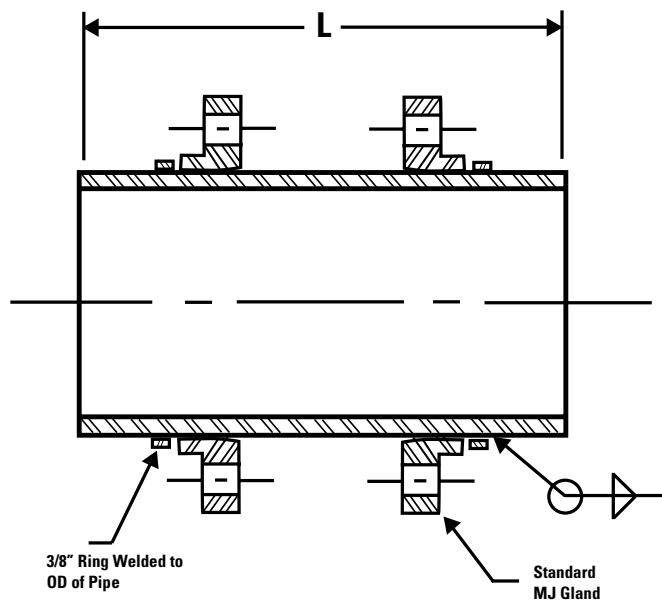
Weld-Ring Type

By means of a continuous weld on the outer/gasket side of the anchor ring. This process will allow the ring and the gland to fit flush on the inside when installing bolts & nuts in a star pattern to eliminate the snapping of glands. Pipe and components must be free of grease and rust on the surfaces to be welded.

Material Specifications

- Pipe: Per ANSI/AWWA A21.51/C151 and ANSI/AWWA C111/A21.11
- Tolerance: Tolerance on length of pipe shall be + or - 0.25"
- Flanged Pipe: Per ANSI/AWWA C115/A21.15
- Flanges: Per ANSI/AWWA A21.10
- MJ Gland: Per ANSI/AWWA C110 & C153/ A21.20 & A21.53
- Lining: Cement lined per ANSI/AWWA A21.4
- Coating: Asphaltic Coating per ANSI/AWWA A21.5
- Anchor Ring: Ductile Iron - ASTM A536 or Carbon Steel ASTM A-36
- Weld Material: Mild Steel or Nickel alloy depending on specification

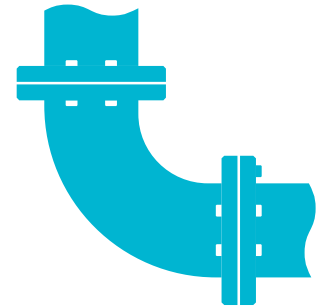
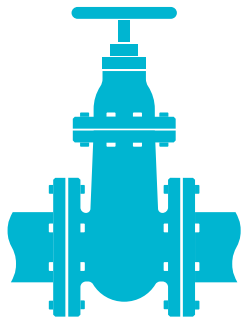
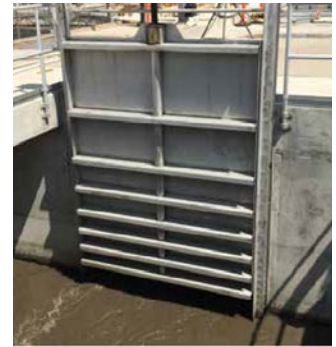
Anchor by Anchor with Welded Ring



For quotes and more information, contact quotes@mcwanepi.com

MPI PRODUCT LINE

VALVES • GATES • PIPE & FITTINGS



VALVES

SOLUTIONS:

- Rotating Disc Gate Valves (AWWA C500)
- Eccentric Plug Valves (AWWA C517)
- Butterfly Valves (AWWA C504)
- High Performance Butterfly Valves (API 609)
- Swing Check Valve (AWWA C508)
- Ken-Flex Resilient Hinged Check Valve
- Telescoping Valve
- Resilient Seat Gate Valve (AWWA C509/C515)
- Pressure Relief Valves (Floor & Wall)
- Mud Valves
- Shear Gate Valves
- Solid Wedge Gate Valve

GATES

SOLUTIONS:

- Fabricated Stainless Steel Gates
- Fabricated Aluminum Gates
- Stop Logs & Stop Gates
- Cast Iron Slide (Sluice) Gates
- Rectangular Butterfly Gates
- Automatic Level Control Gates
- Flap Gates

PIPE & FITTINGS

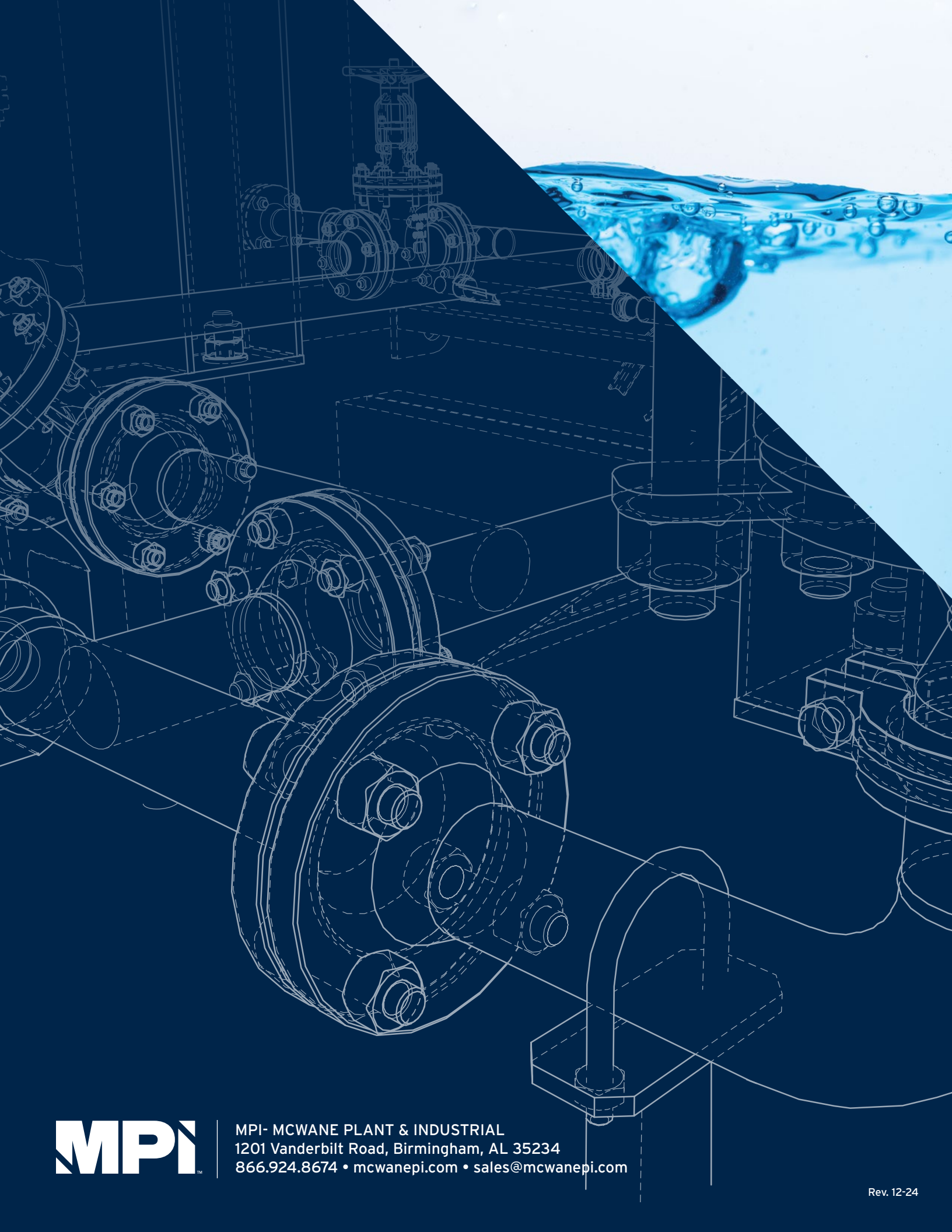
SOLUTIONS:

- Fabricated Flange and Wall Pipe
- Ductile Iron Pipe
- Grooved Pipe & Fittings
- Pipe Linings: cement, glass, Protecto 401™
- Welded Outlets, Thread-O-Lets, Welded Boss
- Restrained Joint Fittings
- Seismic Solutions



POCKET ENGINEER

Available for **iOS + Android**
or online at pe.mcwane.com



MPI- MCWANE PLANT & INDUSTRIAL
1201 Vanderbilt Road, Birmingham, AL 35234
866.924.8674 • mcwanepi.com • sales@mcwanepi.com