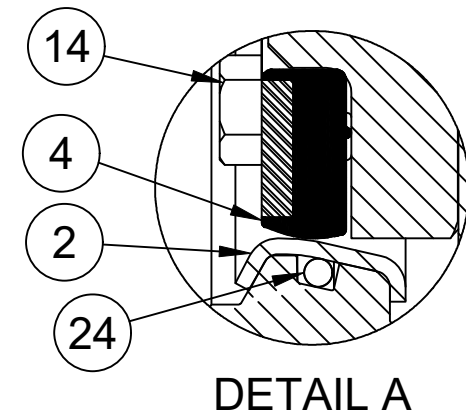
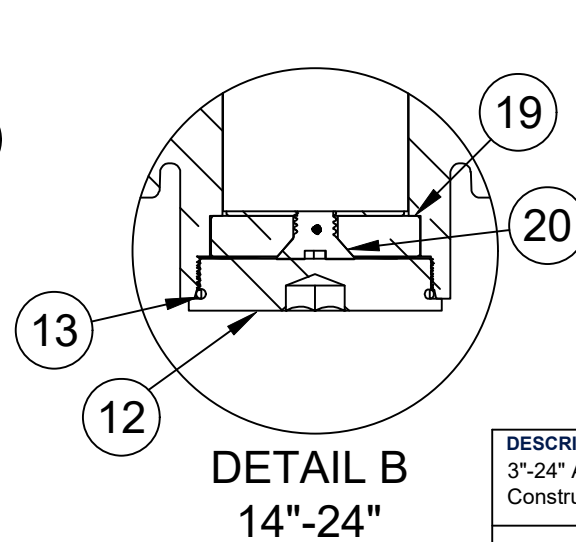


No.	PART	MATERIAL
1	Body	Ductile Iron, ASTM A536 - GR 65-45-12
2	Body Seat Ring	Stainless Steel, T316
3	Disc	Ductile Iron, ASTM A536 - GR 65-45-12
4	Disc Seat Ring	EPDM with Stainless Steel Backing Ring
5A*	Upper Stem	150B - Stainless Steel, T304 250B - Stainless Steel, T630
5B*	Lower Stem	150B - Stainless Steel, T304 250B - Stainless Steel, T630
6	V-Packing	EPDM
7	Bearing	Nylatron
8	Torque Plug	Stainless Steel, 18-8
11	Thrust Bearing	Bronze
12	End Plug	Carbon Steel
13	O-Ring	EPDM
14	Hex Bolt	Stainless Steel, 18-8
16	Seal Plate	Carbon Steel
19	Thrust Ring	Bronze
20	Countersunk Head Screw	Stainless Steel, 18-8
24	Body O-Ring	EPDM

\*Single Piece Stem - 12" & Smaller



<b>DESCRIPTION:</b> 3"-24" AWWA Butterfly Valve Materials of Construction (Seat on Disc - 4600)	<b>DATE:</b> 10/01/24	<b>DRAWING:</b> BF-MC0004-A	