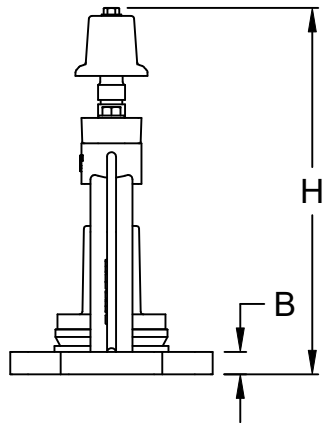
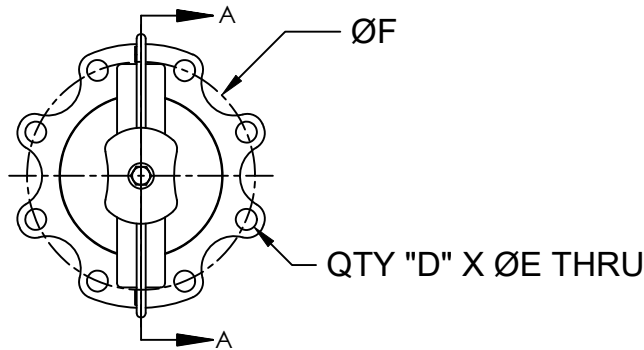
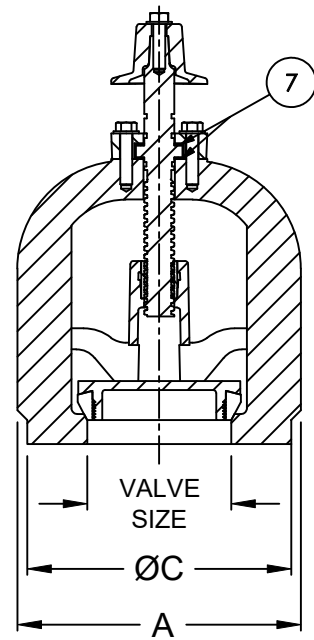


BILL OF MATERIAL

No.	PART	MATERIAL
1	Frame	Ductile Iron - ASTM A536, GR 70-50-5
		Stainless Steel - ASTM A276, T316
2	Stem Cap	Ductile Iron - ASTM A536, GR 70-50-5
		Stainless Steel - ASTM A276, T316
3	Plug	Ductile Iron - ASTM A536, GR 70-50-5
		Stainless Steel - ASTM A276, T316
4	Op Nut	Ductile Iron - ASTM A536, GR 70-50-5
		Stainless Steel - ASTM A276, T316
5	MJ Gasket	Buna-N (NBR)
6	Stem	Stainless Steel - ASTM A276, T316
7	Thrust Bearing	Delrin/Celcon/Acetal - ASTM D6778/D6100
8	Op Nut Bolt	Stainless Steel - ASTM A276, T316
9	Op Nut Washer	Stainless Steel - ASTM A276, T316
10	Cap Bolt	Stainless Steel - ASTM A276, T316
11	Cap Washer	Stainless Steel - ASTM A276, T316



SECTION A-A



DIMENSIONS (Inches)										
SIZE	A	B	C	D	E	F	H	WT (DI) (lbs)	WT (SS) (lbs)	TURNS TO OPEN
3	9.31	0.94	9.00	4	0.75	6.50	6.78	29	32	5.5
4	9.31	0.94	9.00	8	0.75	7.50	6.78	29	32	5.5
6	11.81	1.00	11.00	8	0.88	9.50	9.29	42	46	7.5
8	13.63	1.13	13.25	8	0.88	11.75	10.84	59	63	9.5
10	16.50	1.19	16.00	12	1.00	14.25	13.23	96	102	13.0
12	19.25	1.19	18.75	12	1.00	17.00	15.29	131	137	16.5

NOTE:
1. 3" VALVE OPENING = 4.00"

DESCRIPTION: 3"-12" Non-Rising Stem Mud Valve	DATE: 11/15/24	DRAWING: MV-SD0001-A
---------------------------------------------------------	--------------------------	--------------------------------



McWane Plant & Industrial
1201 Vanderbilt Road
Birmingham, AL 35234

