

MUD VALVE NRS STYLE DUCTILE IRON/ STAINLESS STEEL SIZES 3" - 12"

INSTALLATION & OPERATION MANUAL

TABLE OF CONTENTS	PAGE
Introduction	2
Receiving & Storage	2
Installation	2
Operation	2
Maintenance	2
Troubleshooting.....	2
Parts & Service	2
Drawings	3

INTRODUCTION

The MPI NRS style ductile iron/stainless steel mud valve should be mounted to a standard ANSI CL 125-lb. flange. The mud valve should be recessed so that the top of the valve flange is flush with the floor to allow complete drainage. The mounting surface must be flat and free of debris. Remove any scaling near the inside diameter of the drain line before the valve is installed.

RECEIVING & STORAGE

Inspect mud valves upon receipt to ensure correct material, quantity, and any optional equipment has been received. Also inspect all received equipment for any damage which may have occurred during shipment. Contact the McWane Plant & Industrial sales team to report any issues with materials received.

Unload all valves safely to protect both the materials and workers. Do not allow lifting lugs, slings, or chains to encounter the mud valve plug seating areas. Store mud valves indoors with the valve in the fully closed position to prevent damage to the plug and gasket seating surface by foreign material. If outdoor storage is required valves need to be protected from weather and foreign materials. In colder climates where freezing may occur, remove any water from the valve plug and close valve before storage.

INSTALLATION

WARNING: Installation of valves should be performed by experienced installers. Valves should never be used as structural supports and movement into place. Valves are heavy and may include accessories or bolt on pieces which should be handled with caution.

NOTE: BEFORE INSTALLING THE VALVE: 1. Wipe away any dirt and grit from the inside of the valve 2. The mud valve should be recessed so that the top of the valve flange is flush with the floor to allow

complete drainage. 3. Check the operation of the valve – full open to full closed when installing the valve. 4. Consider using a blind flange as a place holder for the mud valve

Upon completion of the installation, mud valve location, size, type, date of installation, number of turns to open, direction of opening, and any other special information should be entered on permanent records.

OPERATION

The valve operates using a 2" square nut. Open the valve by rotating the 2" square nut counterclockwise (open left). Close the valve by rotating the 2" square nut clockwise (close right).

MAINTENANCE

Verify the mud valve fully seats when closed by opening and closing the valve.

PARTS & SERVICE

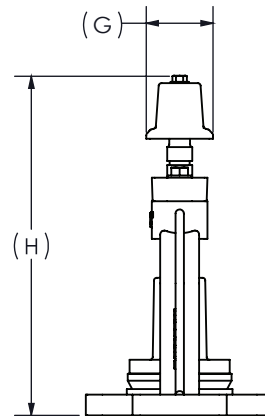
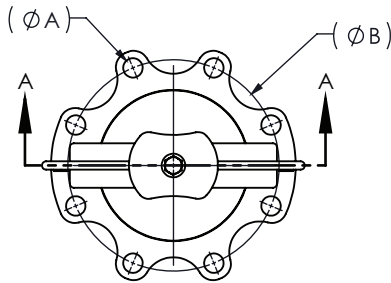
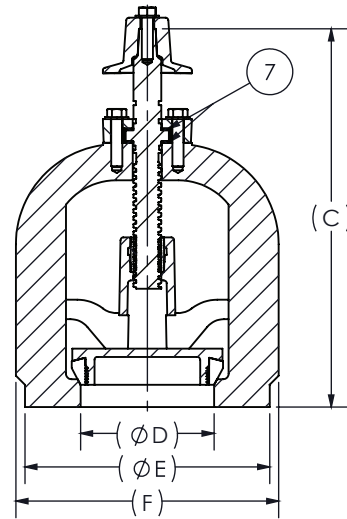
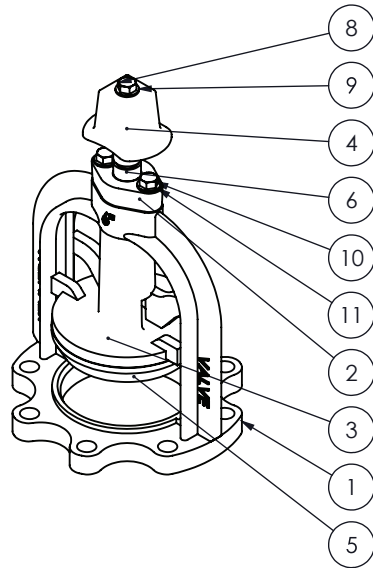
Parts and service are available from your local representative or the factory. For availability and pricing of spare parts please contact the MPI sales team:

McWane Plant & Industrial
www.mcwanepi.com
Phone: 866-924-8674
Email: sales@mcwanepi.com

MUD VALVE ASSEMBLY
NRS STYLE DUCTILE IRON /
STAINLESS STEEL
SIZES 3" - 12"

MPIK-6036-1

ITEM NO.	QTY.	DESCRIPTION	MATERIAL	ASTM
1	1	FRAME	DUCTILE IRON/STAINLESS STEEL	A536 70-50-5/A276
2	1	STEM CAP	DUCTILE IRON/STAINLESS STEEL	A536 70-50-5/A276
3	1	PLUG	DUCTILE IRON/STAINLESS STEEL	A536 70-50-5/A276
4	1	STEM OP NUT	DUCTILE IRON	A536 70-50-5
5	1	MJ GASKET	BUNA-N	D2000
6	1	STEM	STAINLESS STEEL	A276
7	2	THRUST BEARING	DELRIN/CELCON/ACETAL	D6778/D6100
8	1	BOLT	STAINLESS STEEL	A276
9	1	WASHER	STAINLESS STEEL	A276
10	2	BOLT	STAINLESS STEEL	A276
11	2	WASHER	STAINLESS STEEL	A276



	3"	4"	6"	8"	10"	12"
A	3/4" - 4x	3/4" - 8x	7/8" - 8x	7/8" - 8x	1"-12x	1"-12x
B	6.50	7.50	9.50	11.75	14.25	17.00
C	14.31	14.31	17.00	19.31	22.81	24.69
D	4.00	4.00	6.00	8.00	10.00	12.00
E	9.00	9.00	11.00	13.25	16.00	18.75
F	9.31	9.31	11.81	13.63	16.50	19.25
G	3.00	3.00	3.00	3.00	3.00	3.00
H	15.27	15.27	15.24	20.23	23.90	25.78

Mud Valve Size	Unit Weight (lbs)	
	DI material	SS material
4"	29	32
6"	42	46
8"	59	63
10"	96	102
12"	131	137