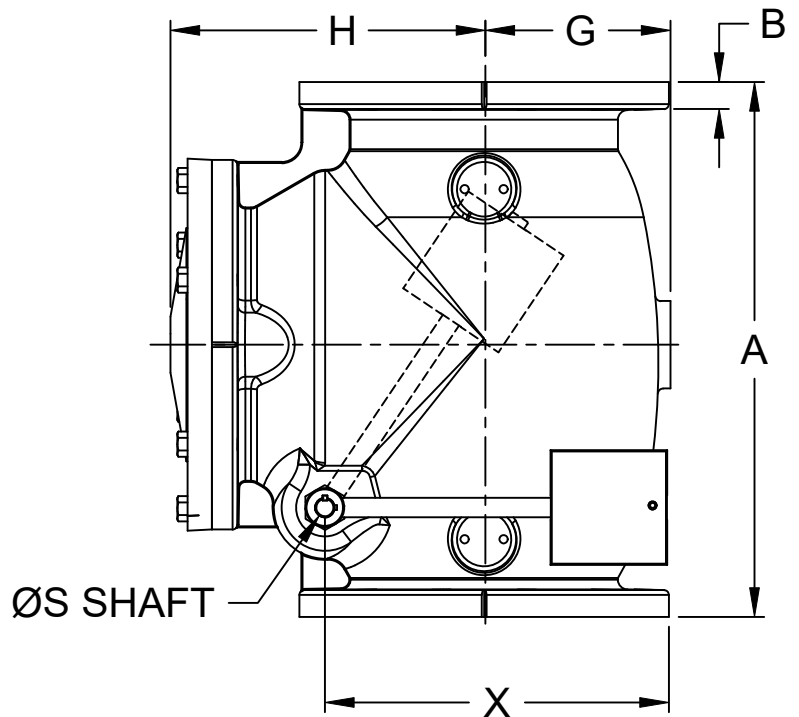
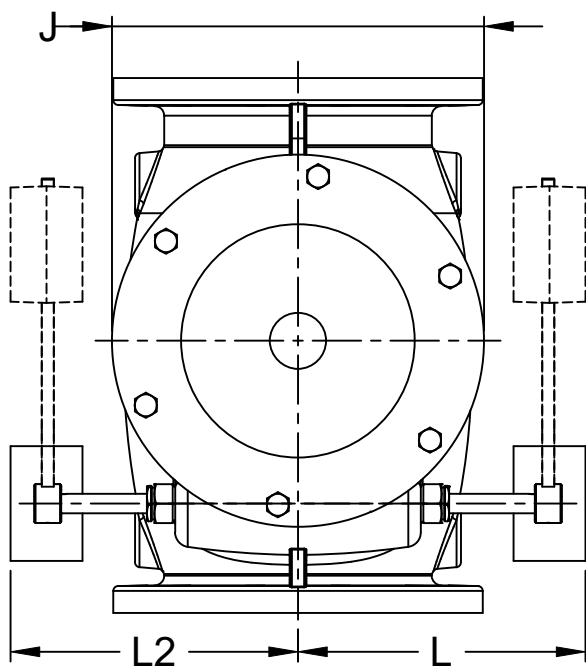
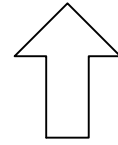


FLOW UP ONLY



DIMENSIONS (Inches)

SIZE	A	B	C	D	E	F	G	H	J	L	L2	S	X	WT (lbs)
3	9.50	0.78	7.50	4	0.75	6.00	-	6.85	7.50	6.31	6.31	0.50	6.00	59
4	11.50	1.00	9.00	8	0.75	7.50	-	8.69	9.00	8.75	8.75	0.63	7.75	101
6	14.00	1.06	11.00	8	0.88	9.50	-	10.51	11.00	9.31	9.31	0.75	9.75	160
8	19.50	1.25	13.50	8	0.88	11.75	-	12.56	13.50	10.88	10.88	0.88	14.13	332
10	24.50	1.31	16.00	12	1.00	14.25	-	14.07	16.75	12.44	12.44	1.00	18.00	486
12	27.50	1.38	19.00	12	1.00	17.00	-	16.13	19.00	14.81	14.81	1.00	18.00	714
14	31.00	1.38	21.00	12	1.12	18.75	10.75	15.97	22.38	18.38	18.38	1.25	24.70	760
16	36.00	1.44	23.50	16	1.12	21.25	11.75	18.88	25.75	18.70	18.70	1.50	24.70	965
18	40.00	1.56	25.00	16	1.25	22.75	12.63	20.30	28.25	21.44	21.44	1.75	30.70	1,257
20	40.00	1.69	27.50	20	1.25	25.00	14.00	20.63	30.50	23.20	23.20	1.75	30.70	1,493
24	48.00	1.88	32.00	20	1.38	29.50	17.50	24.25	34.88	26.50	26.50	2.00	36.69	2,100
30	56.00	2.13	38.75	28	1.38	36.00	19.63	29.88	41.00	28.94	28.94	2.00	36.69	3,105
36	63.00	2.38	46.00	32	1.63	42.75	22.63	33.88	47.00	35.50	35.50	2.63	37.00	4,500

NOTE:

1. FLANGES CONFORM TO ANSI B16.1 CLASS 125
2. COLD WORKING PRESSURE
3"-12" - 250 PSI, 14"-36" - 150 PSI
3. HYDROSTATIC TEST PRESSURE
3"-12" - 500 PSI, 14"-36" - 300 PSI

DESCRIPTION:

3"-36" AWWA C508 - 125# Flanged Swing Check Valve, Dual Lever & Weight (3306), Vertical Install

DATE:

01/15/2025

DRAWING:

SW-DD0012-A



McWane Plant & Industrial
1201 Vanderbilt Road
Birmingham, AL 35234