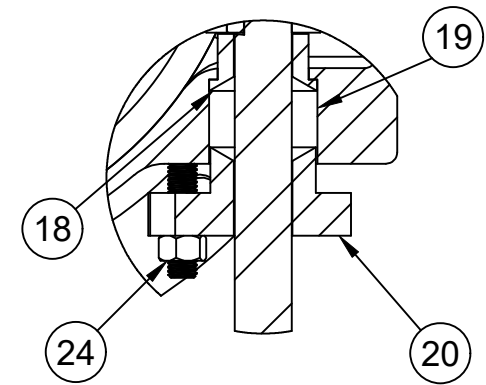


No.	PART	MATERIAL
1	Body	Ductile Iron, ASTM A536 - GR 70-50-05
2	Cover	Ductile Iron, ASTM A536 - GR 70-50-05
3	Cover O-ring	NBR (Buna-N)
4	Cover Bolts	Stainless Steel, T316
5	Hinge Pin	Stainless Steel, T630
6	Hinge	Ductile Iron, ASTM A536 - GR 70-50-05
7	Disc	Ductile Iron, ASTM A536 - GR 70-50-05
8	Disc Seat	NBR (Buna-N) Encapsulated Steel
9	Disc Plate	Stainless Steel, T304
10	Disc Bolt	Stainless Steel, T304
13	Disc Bushing	Brass, ASTM B21, C46400
14	Body Seat Ring	Bronze, ASTM B584 C89833 / C89836
15	Seat Retaining Hardware	Stainless Steel, T304
16	Key	Stainless Steel
18	Stuffing Box Bushing	Bronze, ASTM B505 C87850
19	Packing	PTFE
20	Stuffing Box Gland	Ductile Iron, ASTM A536 - GR 65-45-12
24	Gland Hardware	Stainless Steel, T316



STUFFING BOX DETAILS

DESCRIPTION: 14"-36" AWWA C508 Swing Check Valve Materials of Construction - Plain (3306)	DATE: 01/15/2025	DRAWING: SW-MC0005-A
--	----------------------------	--------------------------------